

460000

Nove

– timeless herringbone

Nove is woven in bouclé with a characterful design that appears as a subtle and modern interpretation of the classic herringbone pattern. A pattern that, with reference to the exemplary anatomy of fish, has been used on everything from tailored suits to noble wood floors in mansions for centuries – and, as a result, has become synonymous with elegance, timelessness, and exclusive quality.

Available in 14 muted colours. Special colours from +200 m². Felt backing from +200 m².



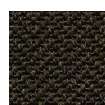
460320



460100



460120



460250



460300



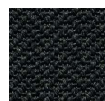
460310



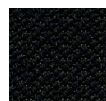
460320



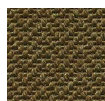
460330



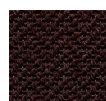
460340



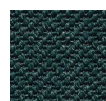
460390



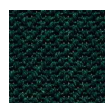
460400



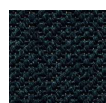
460650



460720



460750

















460850

Nove




460000



Technical data

	Standard	 Broadloom w/Textile	 Broadloom w/Felt	 Tiles
Type of manufacture	ISO 2424	Woven	Woven	
Structure	ISO 2424	Loop pile	Loop pile	
Pile material	ISO 2424	100% PA 6.6	100% PA 6.6	
Dye method		Continuous dyed	Continuous dyed	
Primary backing	ISO 2424	PP/PES	PP/PES	
Secondary backing	ISO 2424	rPET Textile	rPET Felt	
 Dimensions/Width	ISO 3018	Approx. 400 cm	Approx. 400 cm	
Surface pile thickness	ISO 1766	Approx. 3.30 mm	Approx. 3.30 mm	
 Total thickness	ISO 1765	Approx. 4.00 mm	Approx. 5.00 mm	
Total pile mass	ISO 2424	Approx. 750 g/m ²	Approx. 750 g/m ²	
 Total mass	ISO 8543	Approx. 2,200 g/m ²	Approx. 2,600 g/m ²	
Stitch rate	ISO 1763	Approx. 164,000 /m ²	Approx. 164,000 /m ²	
 Antistatic	ISO 6356	≤ 2 kV	≤ 2 kV	
 Classification for use	EN 1307	23 Domestic - Intensive use	23 Domestic - Intensive use	
 Classification for use	EN 1307	33 Commercial - Heavy	33 Commercial - Heavy	
 Luxury rating class	EN 1307	LC1	LC1	
 Impact sound reduction	ISO 10140	Approx. ΔL _w 16 dB	Approx. ΔL _w 21 dB	
 Sound absorption	EN ISO 354	Approx. 0.15 α _w	Approx. 0.20 α _w	
 Thermal resistance	ISO 8302	Approx. 0.06 m ² K/W	Approx. 0.09 m ² K/W	
 Fireclass	EN 13501-1	C _{fl} - s1	C _{fl} - s1	

Certifications

	Standard	 Broadloom w/Textile	 Broadloom w/Felt	 Tiles
CE	EN 14041	0809-CPR-19006044-C3	0809-CPR-19006044-C3	
DOP	EN 14041	1118#19006044-C3	1118#19006044-C3	
UKCA	EN 14041	0086 CPR 780063	0086 CPR 780063	
IACG	EN 16516	Compliant	Compliant	
M1		Compliant	Compliant	
GUI		Compliant	Compliant	
GUT		Compliant	Compliant	
EPD - GWP A1-A3	ISO 14025 EN 15804+A2	11.4 kg CO ₂ - Eq	11.4 kg CO ₂ - Eq	
PEF - LCA Scope 3 CO ₂ - Eq according to EU PEF Standard		14.5 kg CO ₂ - Eq	14.9 kg CO ₂ - Eq	
Reach		Compliant	Compliant	
BREEAM NOR		Compliant	Compliant	
Recycled content		100% recycled backing	100% recycled backing	



As we continuously improve our products and testing procedures, any above declaration is subject to amendments without prior notice.
For the latest technical specifications, installation and maintenance guide visit:

www.fletcocarpets.com